

THIS DRAWING IS INTENDED ONLY AS A GUIDE AND NOT AS A REPLACEMENT FOR PROFESSIONALLY ENGINEERED PROJECT DRAWINGS. THIS CONCEPT SYSTEM DRAWING DOES NOT IMPLY COMPLIANCE WITH LOCAL BUILDING CODES. ACTUAL INSTALLATION MAY VARY DEPENDING ON INSTALLATION LOCATION AND PARAMETERS AND IT MUST BE DONE IN ACCORDANCE TO ALL LOCAL BUILDING CODES. VERIFY WITH LOCAL BUILDINGS OFFICIALS BEFORE COMMENCEMENT OF SYSTEM INSTALLATION. CHANGES OR MODIFICATIONS TO PIPING OR DESIGN IS NOT TO BE PERFORMED WITHOUT EXPRESSED WRITTEN PERMISSION BY NAVIEN, INC.

# DHW RECIRCULATION REQUIREMENTS:

1. SS OR BRONZE BODY AND IMPELLER  
\* DHW SIDE 2.5 PSI PRESSURE DROP @2 GPM.
2. >0.5 GPM TO ACTIVATE BURNER.
3. MAXIMUM 2 GPM.

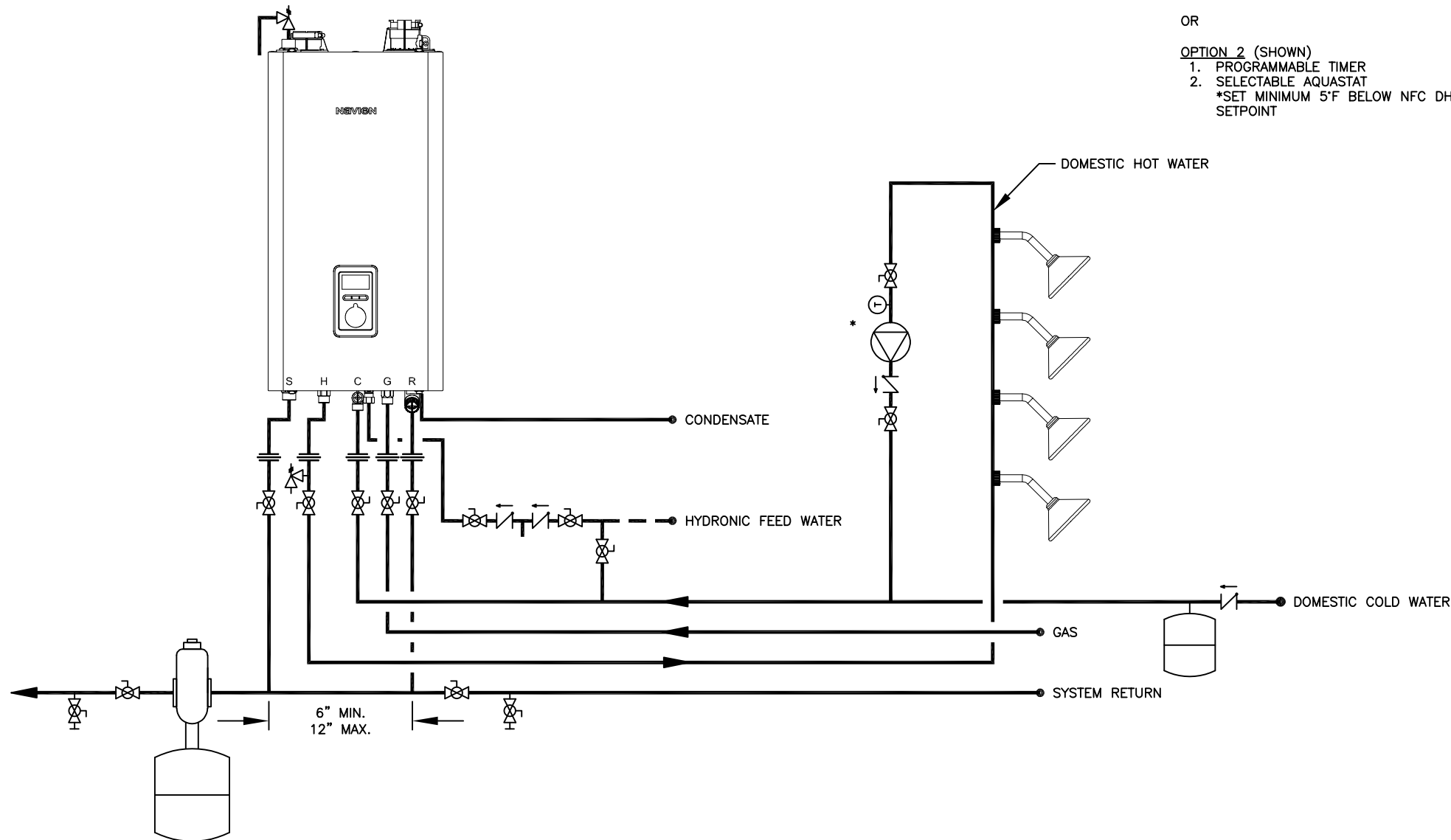
## OPTION 1

1. PUMP WIRE

OR

## OPTION 2 (SHOWN)

1. PROGRAMMABLE TIMER
2. SELECTABLE AQUASTAT  
\*SET MINIMUM 5°F BELOW NFC DHW SETPOINT



20 GOODYEAR  
IRVINE, CA 92618  
800-519-8794  
www.navieninc.com

### NFC-H SERIES COMBI-BOILER

(1) NFC-H COMBI-BOILER APPLICATION  
DHW RECIRCULATION SHOWN  
INCLUDES MODELS NFC-250/175H, NFC-250/200H

DRAWN BY: S. STOEKE

NFC-H-1-P

JUNE 16, 2021

### SYMBOL LEGEND

	BACKFLOW PREVENTER		CHECK VALVE		FULL-PORT VALVE		EXPANSION TANK
	CONTROL WIRING		PRESSURE RELIEF VALVE		CIRCULATOR		UNION
	AQUASTAT		AIR ELIMINATION		BALL DRAIN VALVE		